

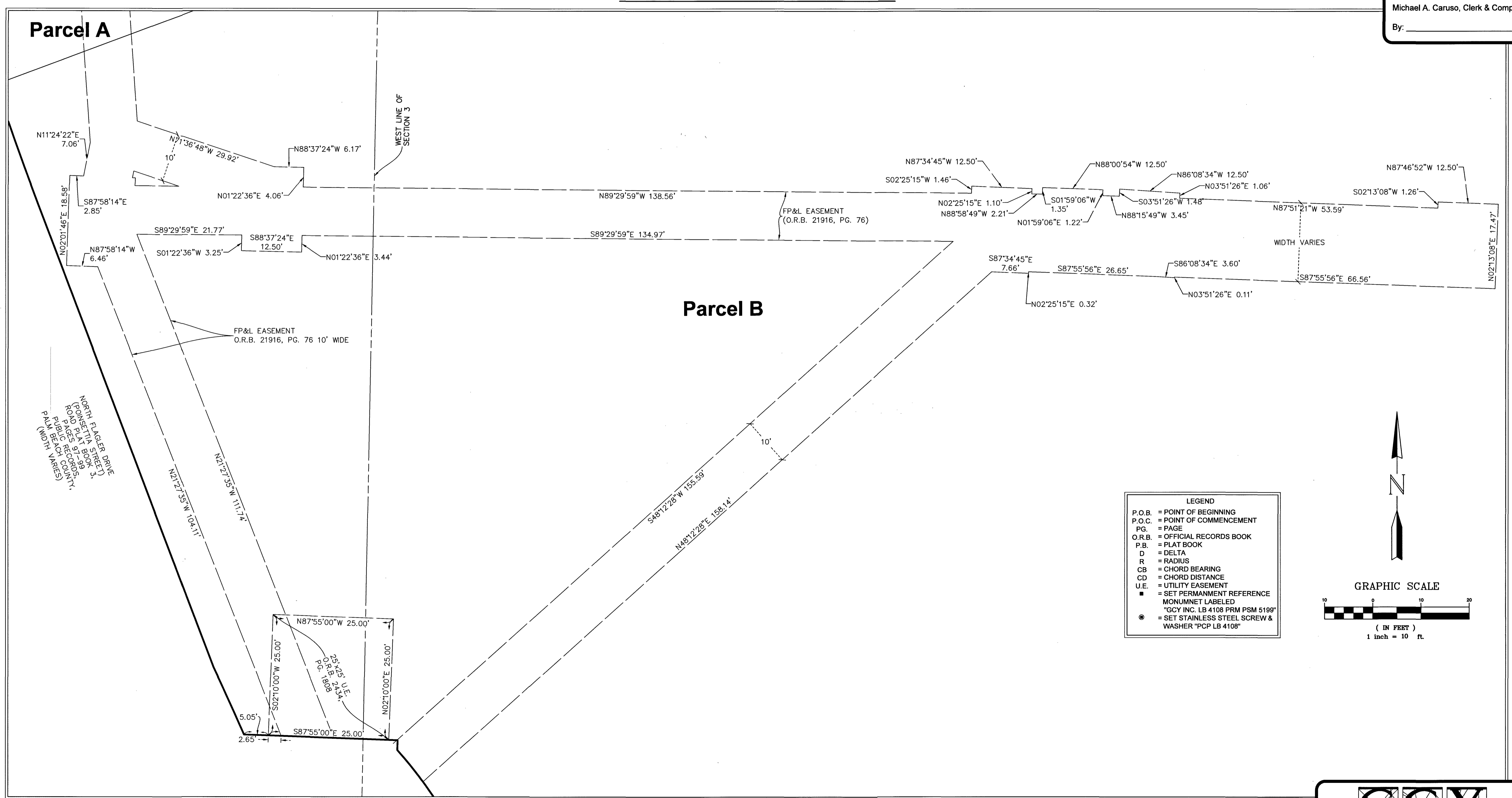
# INTEGRA RYBOVICH

A REPLAT OF SAFE HARBOR RYBOVICH PLAT PARCEL 2  
A PARCEL OF LAND IN SECTIONS 3, 4 AND 10, TOWNSHIP 43 SOUTH, RANGE 43 EAST, CITY OF WEST PALM BEACH, PALM BEACH COUNTY, FLORIDA

# 79

STATE OF FLORIDA  
 COUNTY OF PALM BEACH  
 This plat was filed for record  
 at \_\_\_\_\_, M, this \_\_\_\_\_ day of  
 \_\_\_\_\_, 2026 and duly  
 recorded in Plat Book No. \_\_\_\_\_, on  
 Pages \_\_\_\_\_ to \_\_\_\_\_.  
 Michael A. Caruso, Clerk & Comptroller  
 By: \_\_\_\_\_

## DETAIL "C" FP&L EASEMENT AND UTILITY EASEMENT



**GCY**  
 INCORPORATED  
 PROFESSIONAL SURVEYORS AND MAPPERS  
 CERTIFICATE OF AUTHORIZATION LB 4108  
 CORPORATE OFFICE  
 PO BOX 1469 • 1505 SW MARTIN HWY.  
 PALM CITY, FL 34991  
 (772) 286-8083